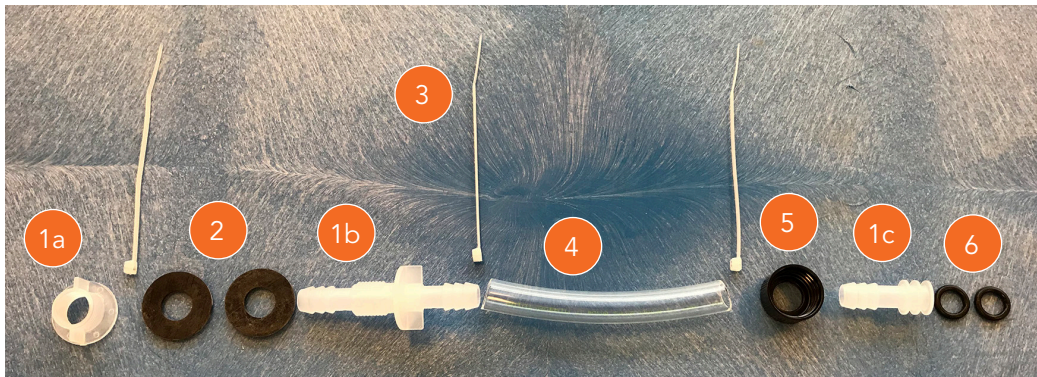


KIT2500PLUME field assembly & installation

COMPONENTS

KIT2500PLUME contains the following:

1. 2500 Plume Kit Parts (parts 1a, 1b, 1c are not available separately.)
2. Washer (2)
3. Cable Ties (3)
4. Injector Tubing
5. Cap
6. O-Ring (2)



ASSEMBLY & INSTALLATION

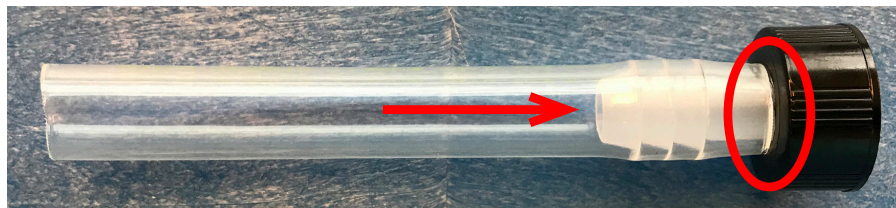
1. Install O-Rings (#6) into grooves of Stem (#1c).



2. Place Cap (#5) over the Stem (#1c) assembly so the threaded portion of the cap covers the O-Rings.



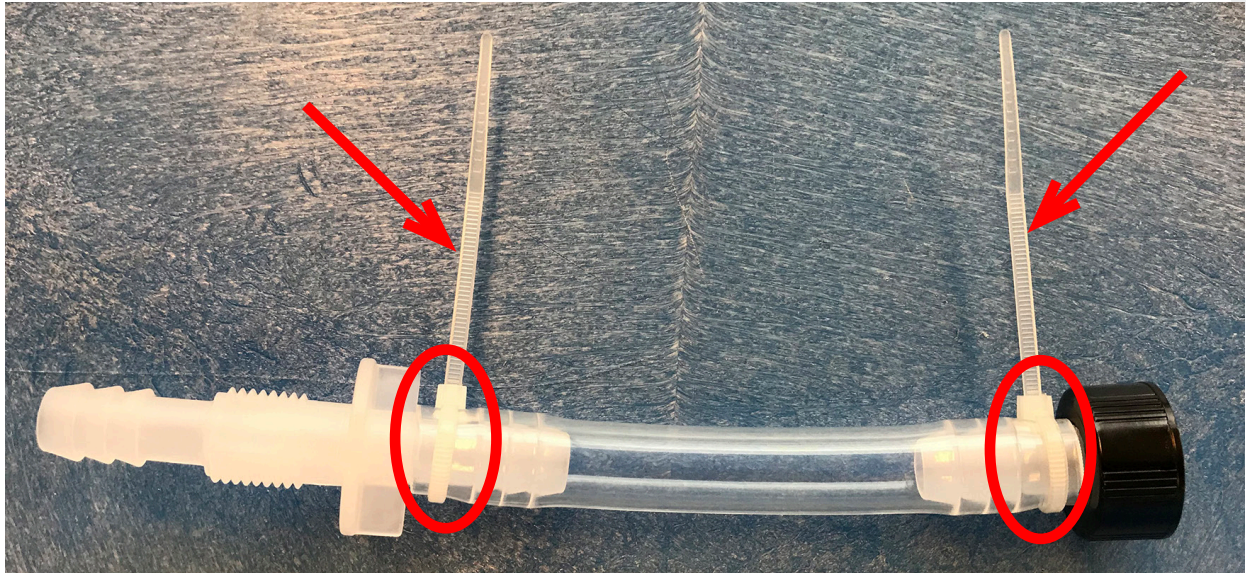
3. Push Injector Tubing (#4) over the barbed portion of the Stem (#1c), allowing a **small gap** between the end of the tube and the Cap (#5) as shown.



4. Push Bulkhead Fitting (#1b) into the open end of the Injector Tubing (#4) until the two parts contact one another as shown.



5. Cinch Cable Ties (#3) tightly around the Injector Tubing (#4) as shown, *between* the barb and the adjoining parts.



6. Cut off the excess Cable Tie (#3) tails.



7. Place Washer (#2) in position shown.



8. Insert assembly fully through the top of the enclosure as shown.



Interior of enclosure

9. Place Washer (#2) in position.



Exterior of enclosure

10. Screw Bulkhead Nut (#1a) into position, tightly enough to close any gaps, and create a seal between the Washers (#2) and the enclosure.

