



PROLITEC

PERFECTLY SCENTED ENVIRONMENTS

Through Wall installation instructions



AIRO
BY PROLITEC

Original Instructions

Rev. 2019-01-04

Contents

[Chapter 1: Tools Required](#)

[Chapter 2: Unpacking](#)

[Chapter 3: Assembly](#)

[Chapter 4: Installation](#)

[Positioning the Appliance](#)

[Positioning the Plume Outlet](#)

[Preparing the Appliance](#)

[Connecting the Appliance](#)

Tools Required

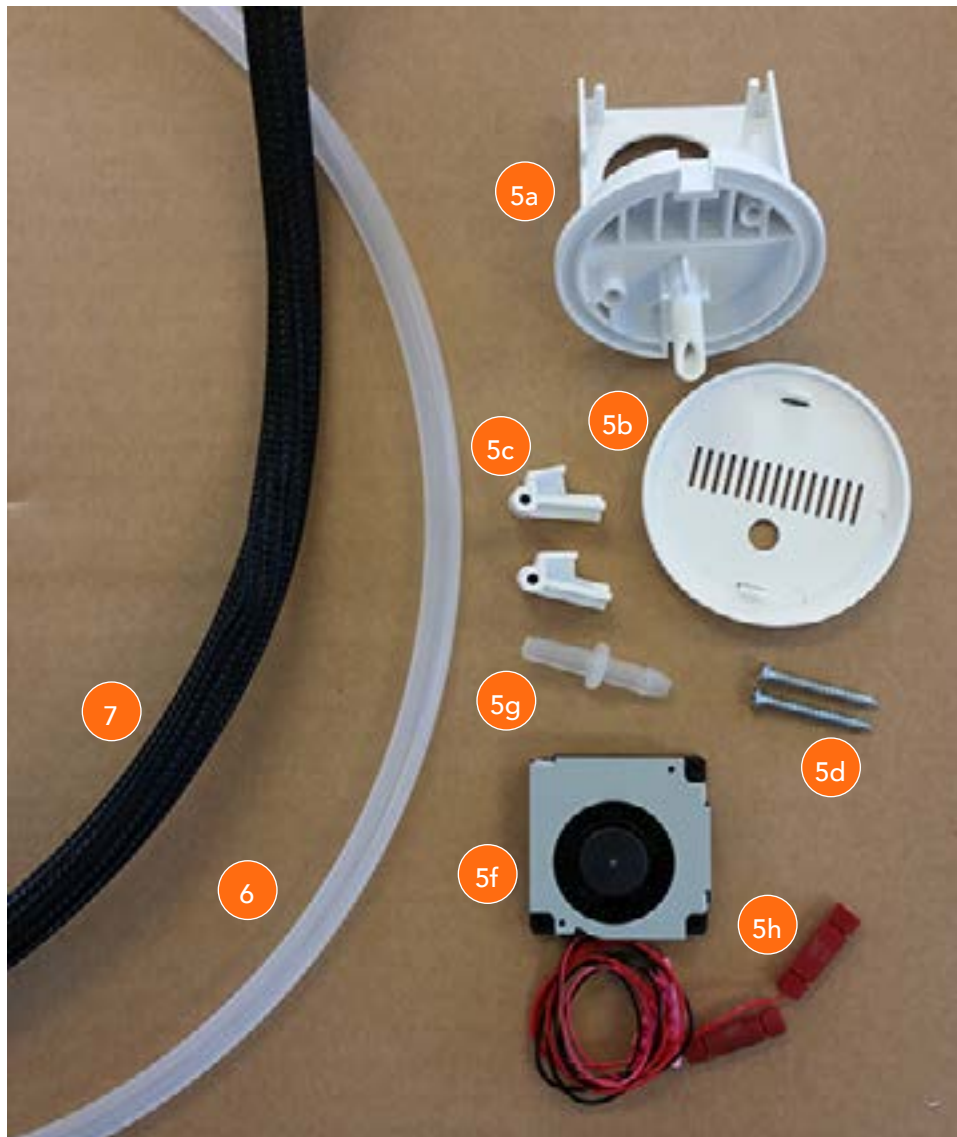
1. Stud finder
2. Drill
3. Phillips #2 bit
4. < 1/2" drill bit
5. Keyhole saw (not pictured)
6. 2 1/8" hole saw
7. Exacto knife (not pictured)



Unpacking

Remove all parts from the container. The following items should be included:

1. AQ570/580 Appliance (not pictured)
2. 110/220V to 15V Power Adapter (not pictured)
3. Universal Plug Kit (not pictured)
4. Wall Mount Hardware Kit (not pictured)
5. Through Wall Fitting Parts (in bag)
 - a. Base Housing
 - b. Trim Ring
 - c. Drywall Clips (2)
 - d. 1 ¼" Screws (2)
 - e. 3" Screws (2) (not pictured)
 - f. Fan w/ 18" black and red wires
 - g. Tube Connector
 - h. Wire Connectors (2)
6. Tubing (18")
7. Braided Cord Wrap (18")

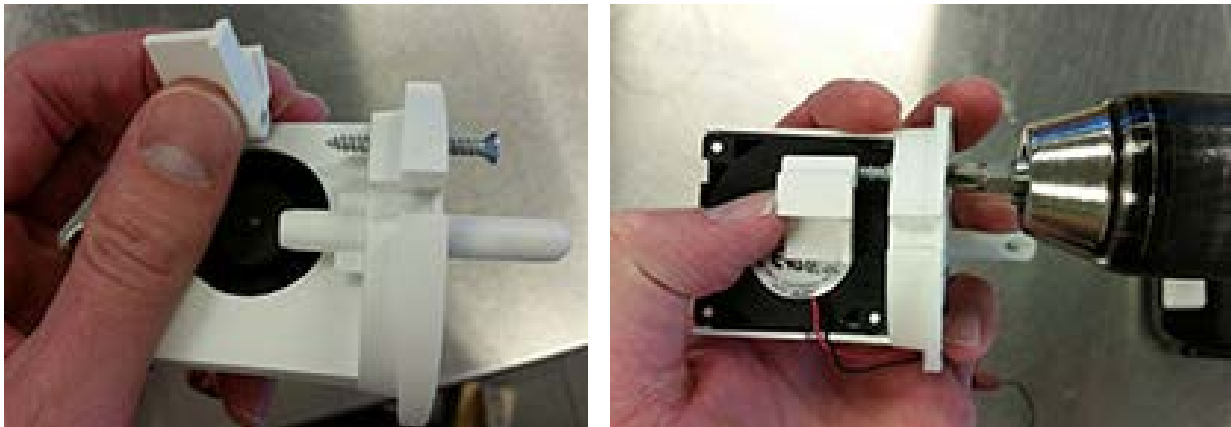


Assembly

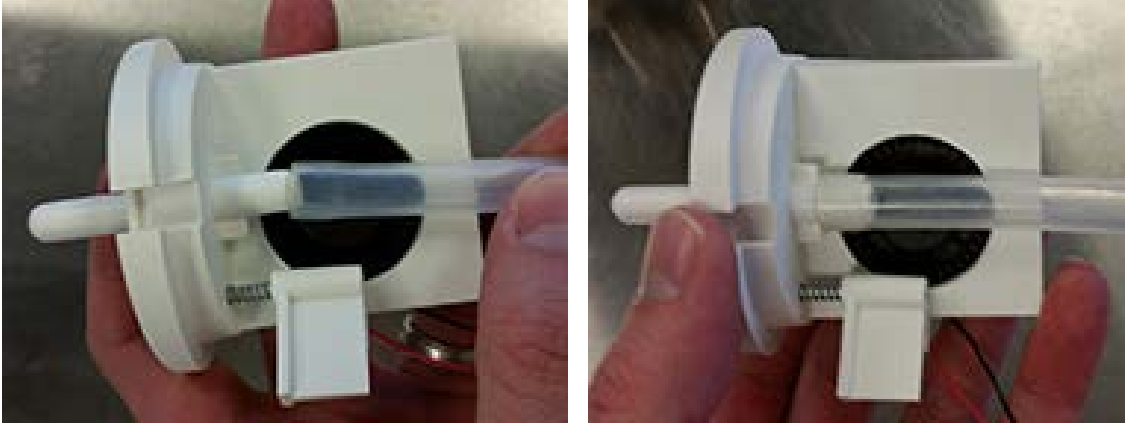
1. Press fit the fan into the base housing part by aligning the three corner holes to the three hexagonal posts.



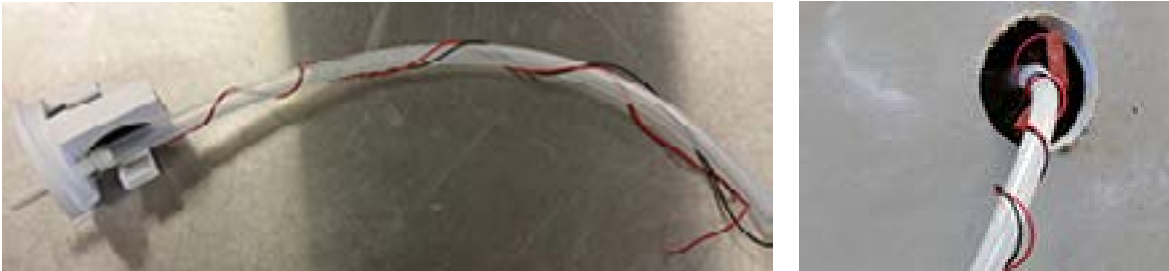
2. Insert the correct length screw (dependent on installation type) into the holes on the front of the base housing part, thread the drywall clips onto each screw, and tighten screws three or four turns.
 - a. 1 ¼" screws should be used on drywall/gypsum board
 - b. 3" screws should be used on doors



3. Push one end of the tubing onto the fitting on the back side of the base housing part, just below the fan tray, and rotate the clips in toward the fan on both sides.



4. Wrap the wire around the tubing.



5. Slide the cord management sleeve over the tube and wire.



Installation

Positioning the appliance in the “appliance mounting room”

1. Identify the area on the opposite side of the wall from the approximate mounting location.
2. Verify that you have an area of empty wall cavity, using a stud finder.



3. Cut a 6" x 6" square hole with a keyhole saw, so that you can verify that there is not electrical or plumbing in the way and so that you can get the drill inside the wall cavity.
4. Working from within the 6" square, drill a pilot hole through the front wall surface, with the 1/2" drill bit.
5. Mount the appliance on the wall normally, with the top of the appliance six to eight inches below the bottom of the 6" square hole.

Positioning the plume outlet in the room to be scented

1. Drill a 2 1/8" hole, centered on the pilot hole, with the hole saw.



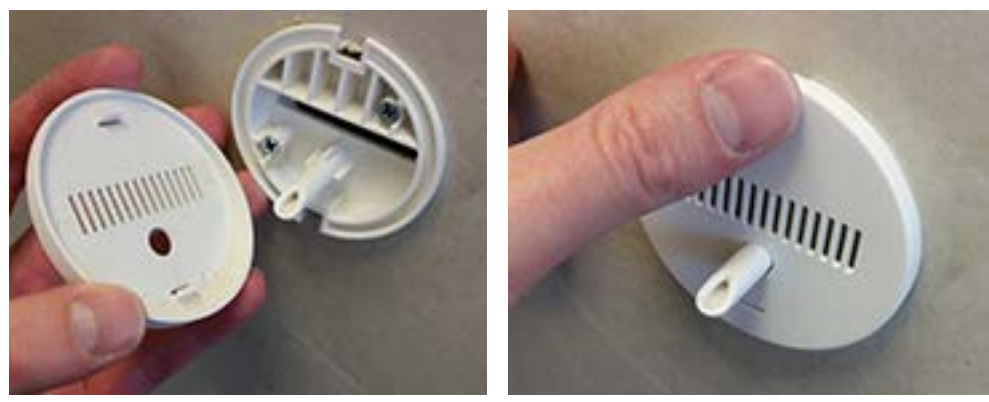
2. Insert the base housing, with the fan, clips, and tube already attached, into the hole.



3. Screw in the two screws until you feel the plastic snug towards the drywall.



4. Snap the trim ring over the front to hide the screws.



Preparing the Appliance

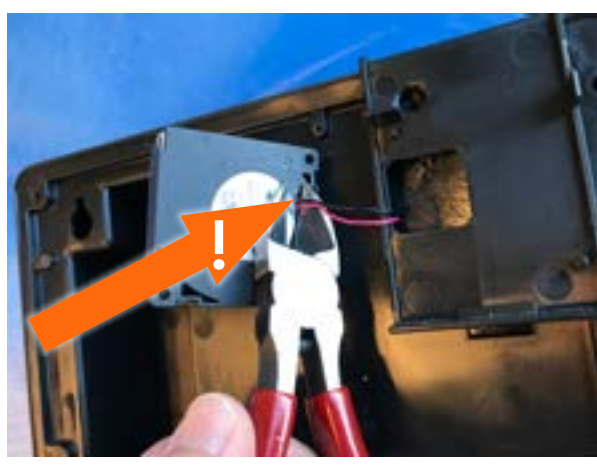
1. Remove fan shroud



2. Remove fan

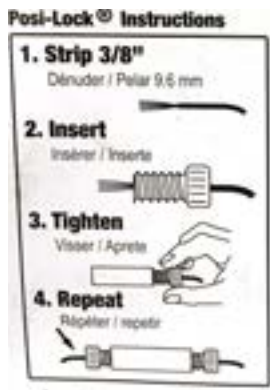


3. Cut fan wires at the fan



Connecting the appliance in the "appliance mounting room"

1. Connect the wires of the fan assembly to the wires from the appliance, red to red and black to bl



2. Bundle the wires and tube inside of the sleeve.



3. Install the cartridge with the top plume port open.
4. Insert the plume tube into the top plume port of the cartridge.

