



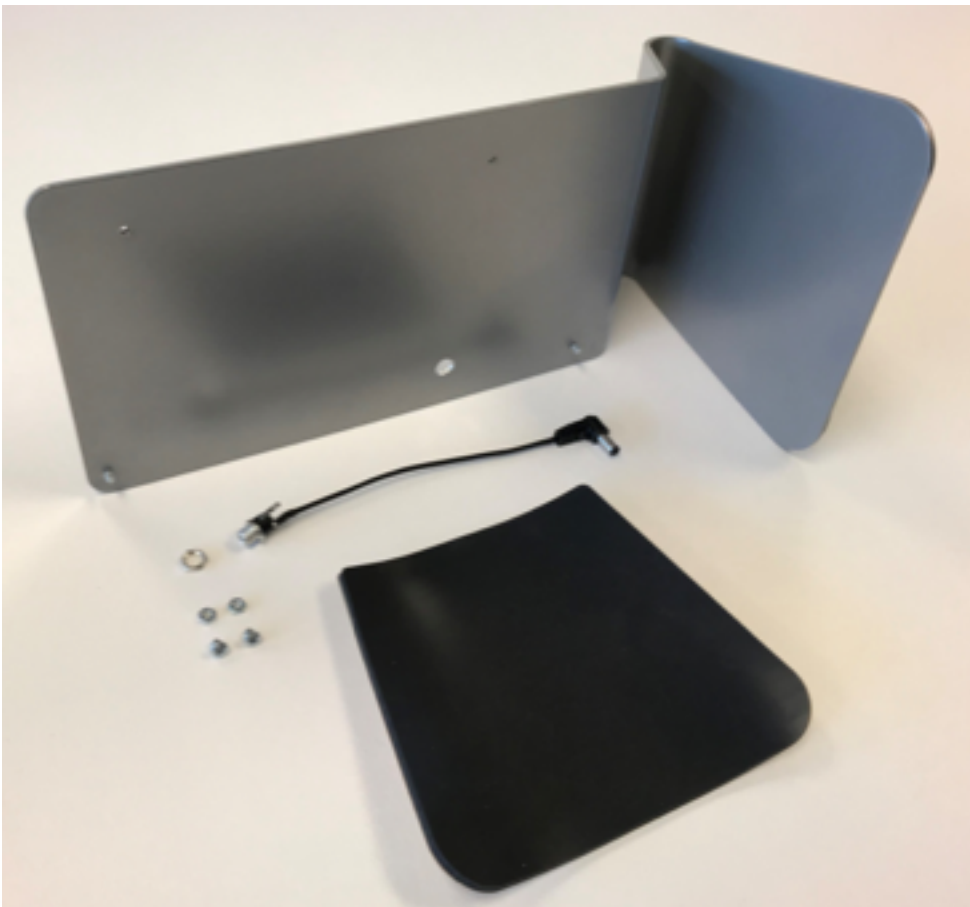
PERFECTLY SCENTED ENVIRONMENTS

270TT Assembly Instructions

Rev. 2018-06-20

Appliances or Kits shipped after May, 2018

PARTS NEEDED



TOOLS RECOMMENDED

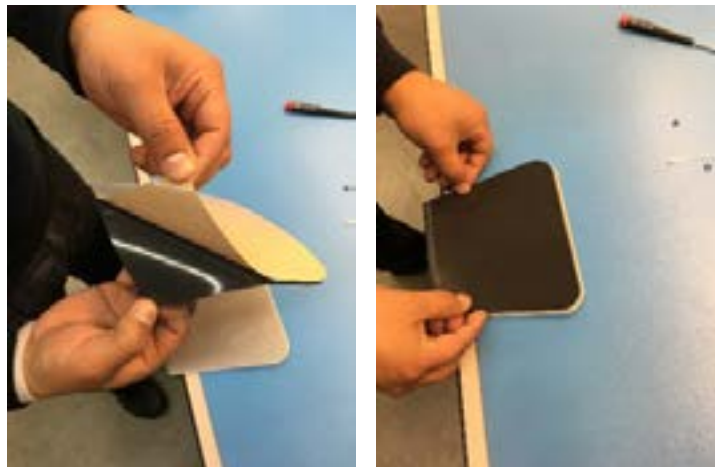
- #1 Phillips Screwdriver
- 3/8" Nut-driver

INSTRUCTIONS

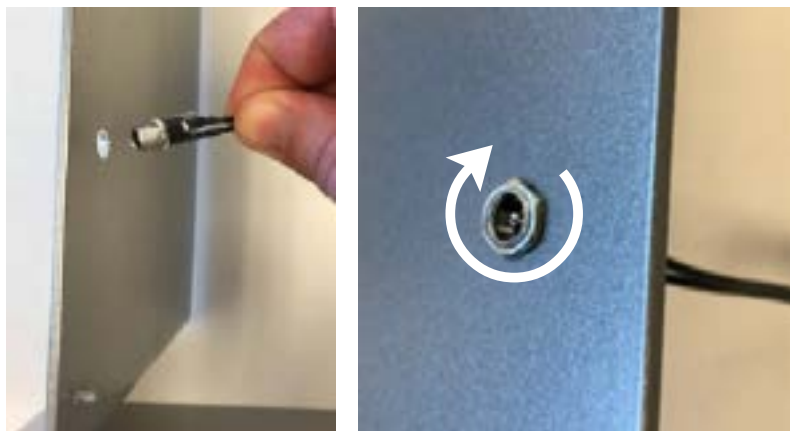
1. Attach nuts.



2. Attach base pad:



3. Install power extension, tighten nut (3/8" Nut-driver recommended for best results).



4. Connect appliance to stand.



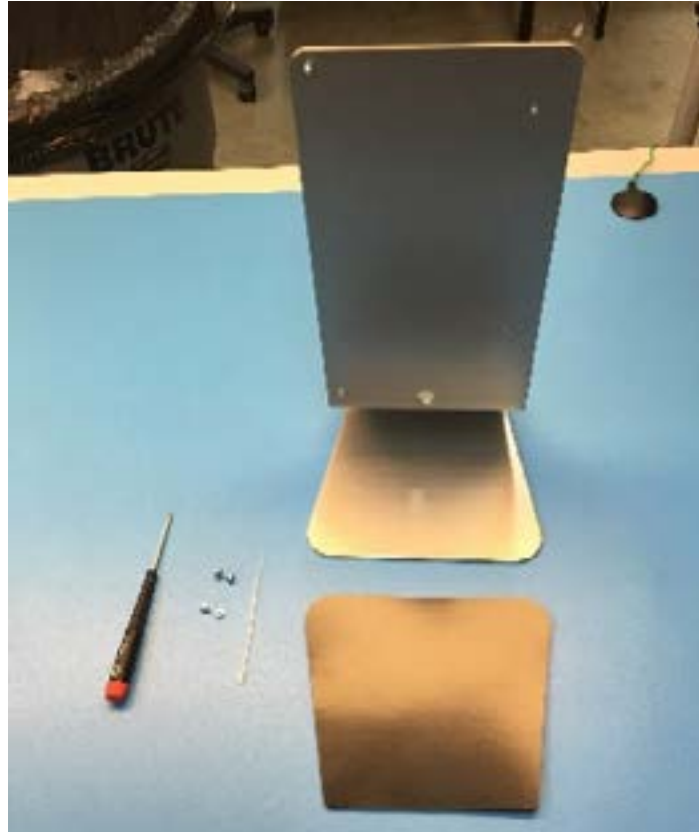
5. Tighten screws to fasten appliance to stand.



Appliances or Kits shipped before May, 2018

PARTS NEEDED

(appliance & power supply not shown, #1 Phillips screwdriver not included)



INSTRUCTIONS

1. Attach nuts.



2. Attach base pad:



3. Connect power cord (see template at right for length to loop).

