



PERFECTLY SCENTED ENVIRONMENTS

KIT580TM

field assembly & installation

Rev. 2018-05-01

SUPPLIES REQUIRED

- Wire Cutters
- Drill
- 1/16" drill bit
- 5/8" drill bit
- Appropriate Drill bit for Track Light threaded nipple
- Appropriate track light
- 3" tape

COMPONENTS

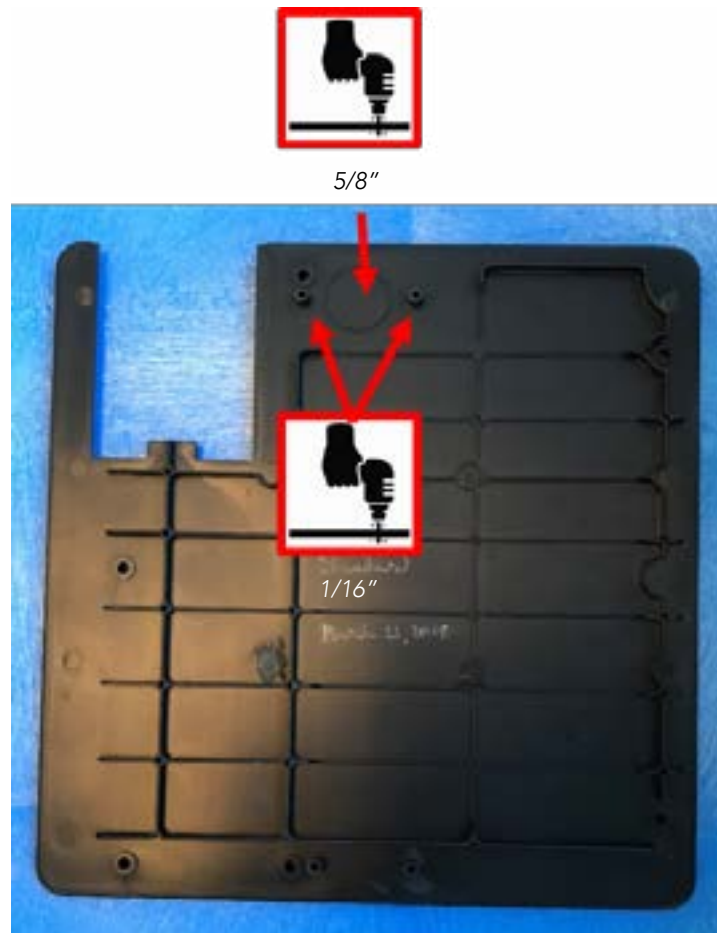
KIT580TM contains the following:

- 8445 (12) Thread forming screws
- 8829 Track Mount Shroud
- 8830 Rear Panel
- 9108 Power Cord 18"



ASSEMBLY & INSTALLATION

1. Drill a 5/8" hole and (2) 1/16" holes through the bosses.



2. Cut the power connector off.



3. Plug connector into the power supply



4. Connect power jack into the appliance, wrap excess cord and stuff into cavity.



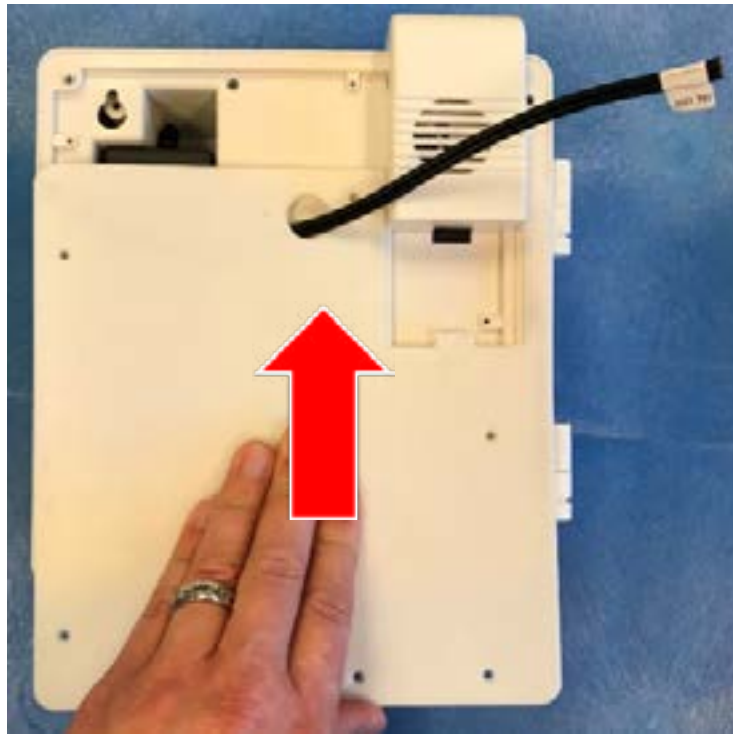
5. Seat power supply and retain power cord as shown.



6. Thread power cord through panel.



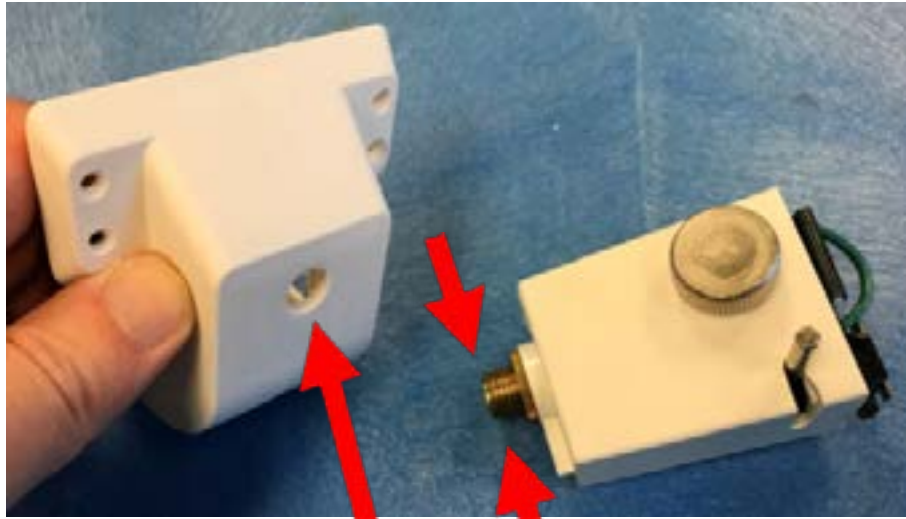
7. Slide the panel into place.



8. Use six screws to secure the panel.



9. The hole in the shroud is sized to fit the smallest standard track light adapter. If your track light adapter has a larger thread you may need to expand this hole.



Expand hole as needed

10. Secure the track light adapter to the track light shroud with a nut provided with the track light adapter. Make the electrical connection to the adapter either inside the adapter or behind the shroud. Use thread locker such as Loctite 242.



11. Secure the shroud to the appliance with two screws to the back panel and four screws to the chassis.

