



## FIELD INSTALLATION INSTRUCTIONS

**Subject:** KIT270AIR – Field Installation Instructions

**Date:** October 17, 2017

**Scope:** AQ270 Appliances

**Instructions:** KIT270AIR – Field Installation Instructions

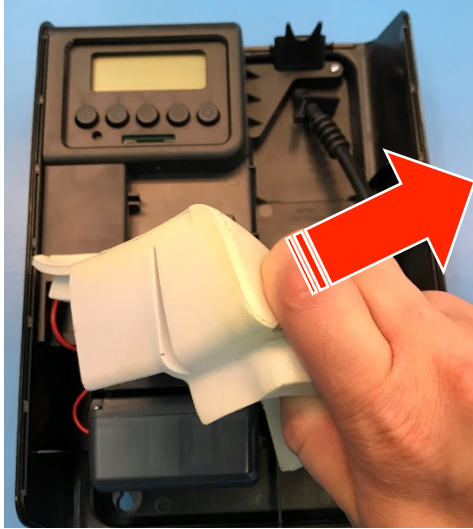
1. Disconnect appliance from power source. If needed, carefully move appliance to appropriate work area. Remove cover and fragrance cartridge



# PROLITEC

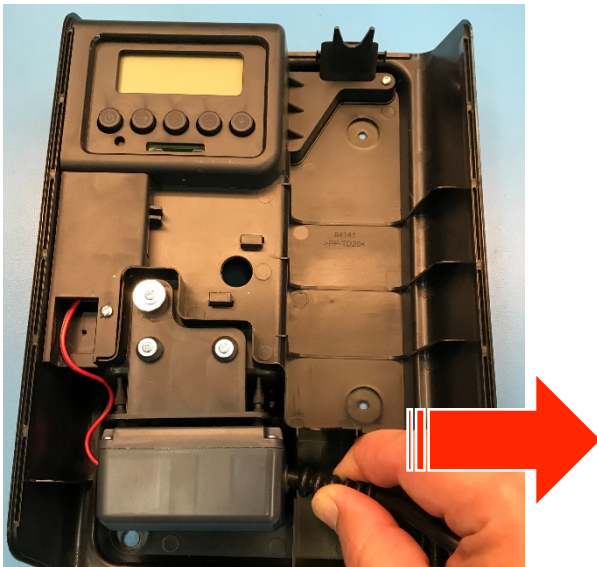
## FIELD INSTALLATION INSTRUCTIONS

2. Grasp foam, and pull away from appliance chassis



3. Properly dispose of the foam.

4. Grasp air line near the pump connection and carefully pull it away from the pump in the direction shown



5. Properly dispose of the air line.

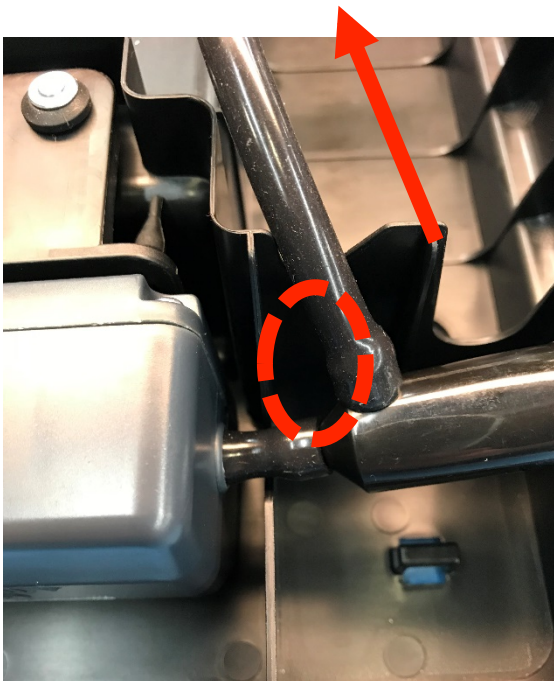
# PROLITEC

## FIELD INSTALLATION INSTRUCTIONS

6. Connect KIT270AIR to the pump, pushing in the direction shown



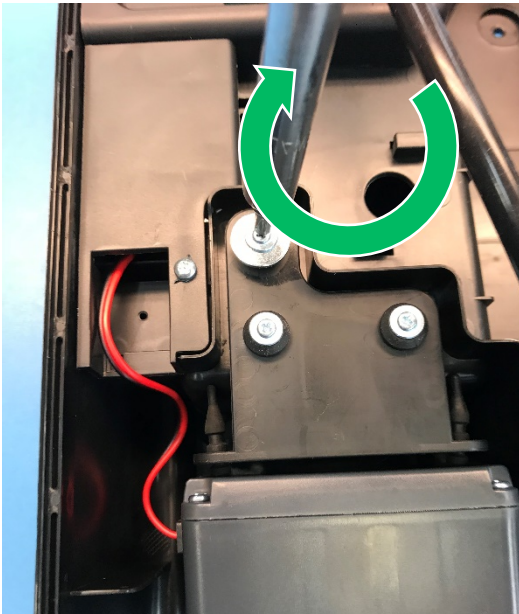
7. Ensure that the short tube is **fully engaged** with the pump connection, and that the vertical tube is oriented as shown





## FIELD INSTALLATION INSTRUCTIONS

8. Tighten screw under the washer to prevent rattle



9. If needed, reinstall unit. Restore power. Replace fragrance cartridge and cover.

If there are any additional questions, please contact Customer Care, [customer care@prolitec.com](mailto:customer care@prolitec.com) or Ben Musson, [bmusson@prolitec.com](mailto:bmusson@prolitec.com).