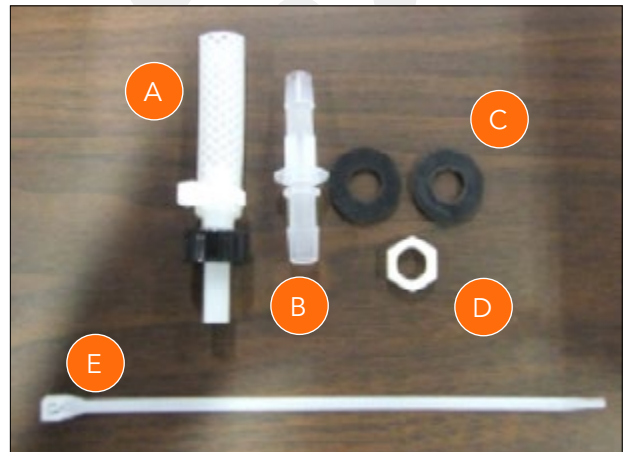


AQ/PS1200 Plume Connector Assembly Instructions

PLUME CONNECTOR KIT

The plume connector kit (PN10520) contains the following:

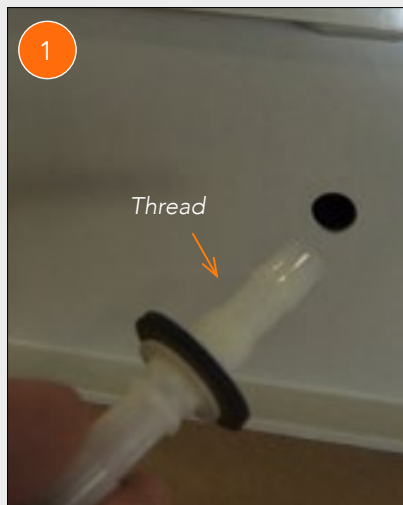
- A. 1 tubing assembly
- B. 1 connector
- C. 2 washers
- D. 1 nut
- E. 1 cable tie



ASSEMBLY

Step 1:

Insert washer and insert assembly, threaded side first, through the hole on the top of the appliance.



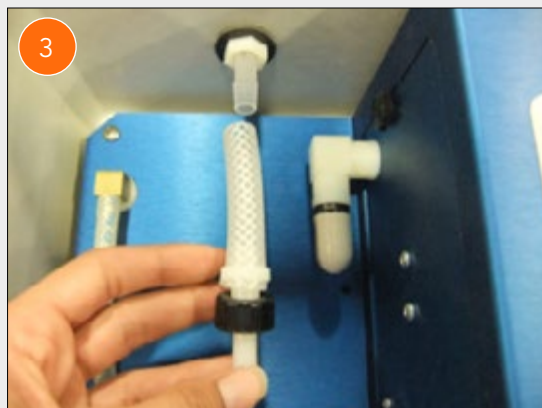
Step 2:

Insert another washer and secure with nut. Use pliers to ensure a watertight seal.



Step 3:

Push the tubing assembly over the barbed fitting.



Step 4:

Important: Secure with cable tie.

